



**Status Web  
Evaluator's Guide**



©2024 Software Pursuits, Inc.

## Table of Contents

---

Introduction .....	2
System Requirements.....	2
Contact Information.....	2
Installing Microsoft IIS.....	2
Verifying Microsoft IIS Features.....	9
Installing Web Deploy .....	9
Run the SureSync Status Web Installer.....	10
Website Configuration via IIS Manager (UI).....	10
Step 1: Create a Folder to Store the Website Files .....	10
Step 2: Create the Website in IIS .....	10
Step 3: Enable Windows Authentication for the Website.....	12
Step 4: Confirm Application Pool Settings .....	13
Step 5: Install Website Files using Web Deploy .....	14
Website Configuration via the Command Line.....	17
Controlling Access to Status Web.....	18
IIS Windows Authentication.....	18
SureSync Group Folders.....	19
Configuring SureSync Scheduler(s) and MFT Hubs .....	20
Configure the Scheduler Connection.....	20
Allow the Display of Standalone Jobs (optional).....	22
Recycle the IIS Application Pool.....	23
Using Status Web .....	24
Start / Stop .....	25
View Status .....	25

## Introduction

---

SureSync is a powerful file replication & synchronization application that provides critical services to your network. As with any critical application, the status of SureSync should be monitored. Before the introduction of Status Web, these tasks were accomplished via status applications installed on the machine(s) that needed to view status.

Status Web is an innovative browser-based status application for SureSync and SureSync MFT. Access is controlled via Internet Information Services (IIS) Windows authentication and SureSync's Group Folder security. With Status Web, an administrator can easily allow a user to:

- Stop and start Real-Time Monitors, Schedules, and standalone Jobs.
- View statistics such as warnings, exceptions and files added/deleted.

This guide will assist you in deploying Status Web and understanding the capabilities of the program.

## System Requirements

---

SureSync Status Web system requirements are:

- **Operating System:** Windows 2008 R2 or newer
- **Internet Information Services (IIS):** 7.5 or newer with WebDeploy installed
- **Microsoft .NET Framework:** 4.8

## Contact Information

---

If you need further information about SureSync or need clarification on anything within this guide, please contact our support group and they will be happy to assist you with your evaluation.

**Software Pursuits, Inc.**  
140 Chestnut Ln  
San Mateo, CA 94403

Phone: +1-650-372-0900  
Fax: +1-650-372-2912

Sales e-mail: [sales@softwarepursuits.com](mailto:sales@softwarepursuits.com)  
Support e-mail: [support@softwarepursuits.com](mailto:support@softwarepursuits.com)

Technical support is available between 7:00AM and 4:00PM PST Monday through Friday.

## Installing Microsoft IIS

---

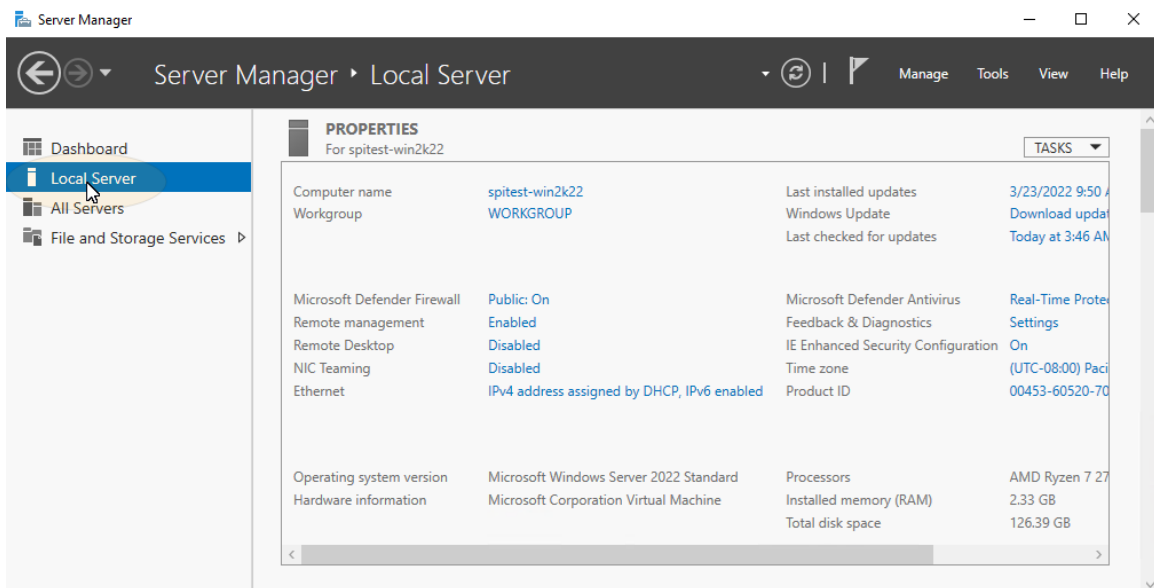
SureSync Status Web must be installed on a Windows server running Microsoft Internet Information Services (IIS). If you're installing IIS on a machine specifically for Status Web, this section will provide details on installing Microsoft IIS.

If you're adding Status Web to an existing IIS server, skip to the next section titled "Verifying Microsoft IIS features."

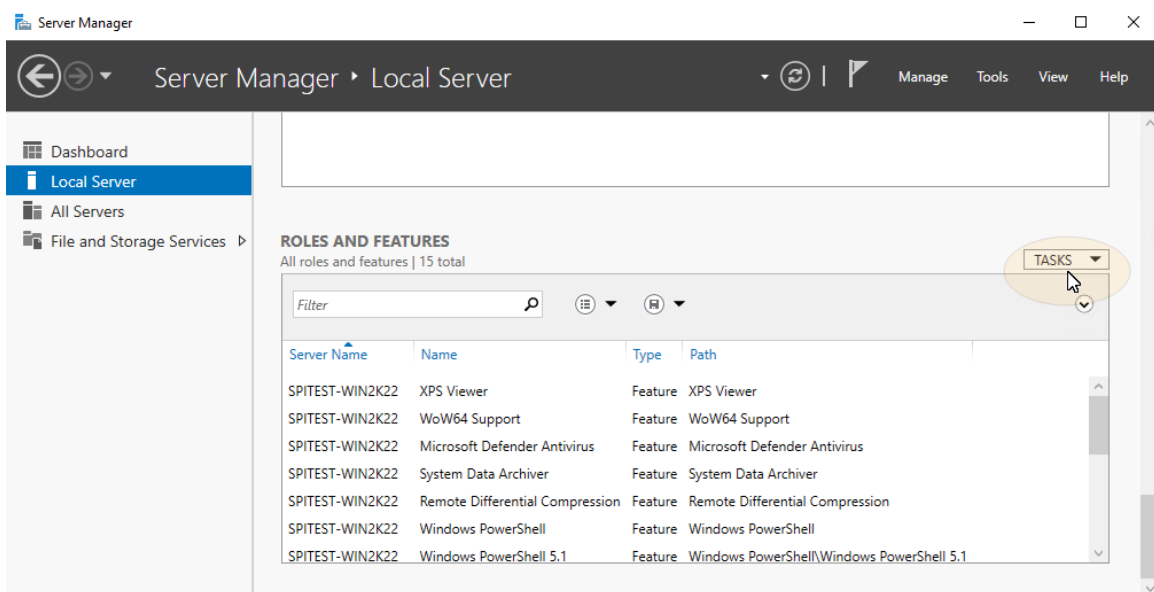
Detailed documentation for installing IIS 7.5 on 2008 R2 can be found at <http://www.iis.net/learn/install/installing-iis-7/installing-iis-7-and-above-on-windows-server-2008-or-windows-server-2008-r2>. Instructions on installing IIS 8.5 on 2012 R2 can be found at <http://www.iis.net/learn/install/installing-iis-85/installing-iis-85-on-windows-server-2012-r2>. This guide will walk through the basics of installing IIS on a sample Windows 2022 machine. The procedure is similar for older operating systems.

The Server Manager is where you will install IIS and can be launched by clicking on the Server Manager icon in the Task Bar (if present) or by entering Server Manager into Search.

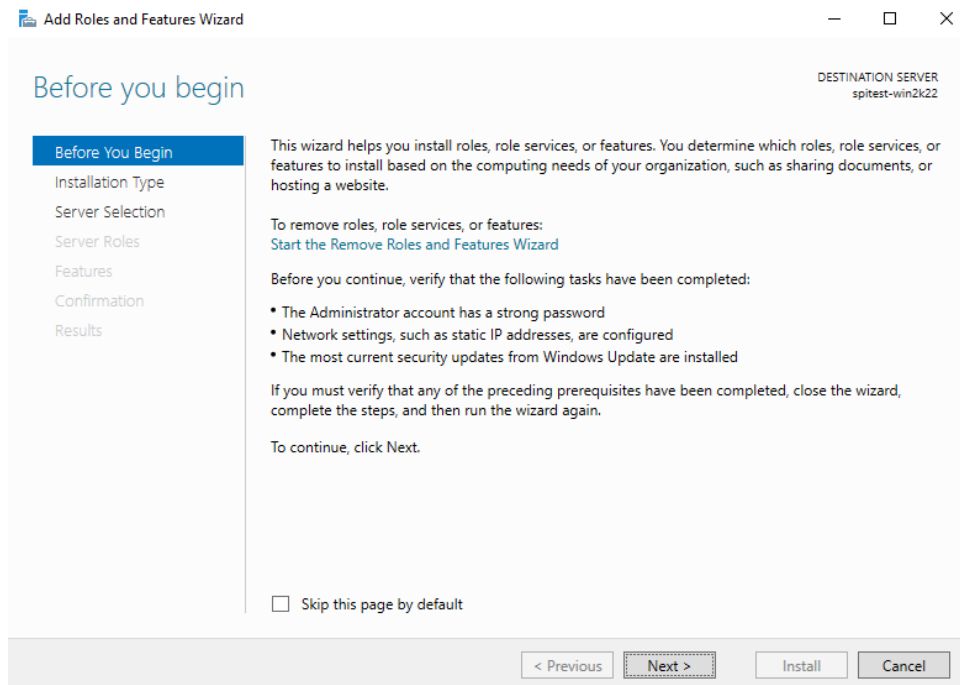
Click on “Local Server” on the left to display information about the server.



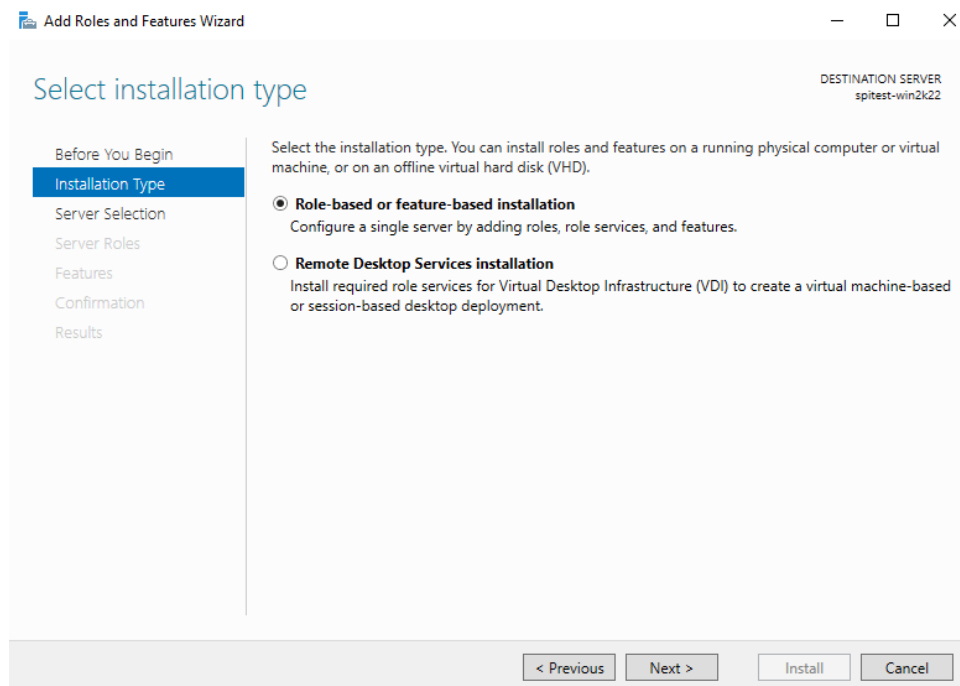
Scroll down until you see “Roles and Features.” Click on the “Tasks” button to the right and select “Add Roles and Features” from the drop-down menu.



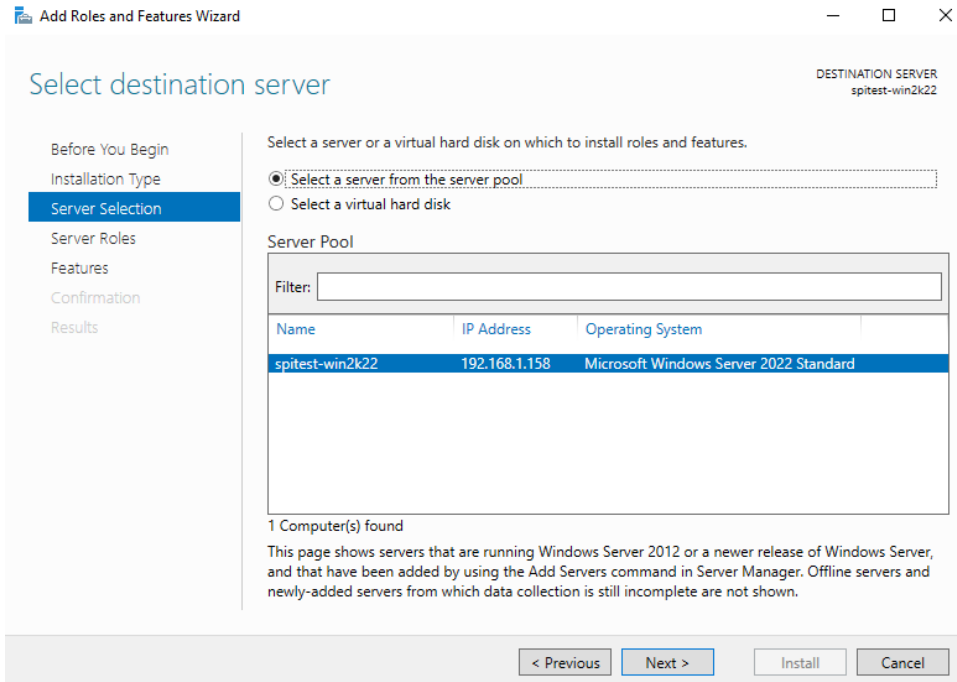
The “Add Roles and Features Wizard” will be displayed. Click “Next” on the first panel.



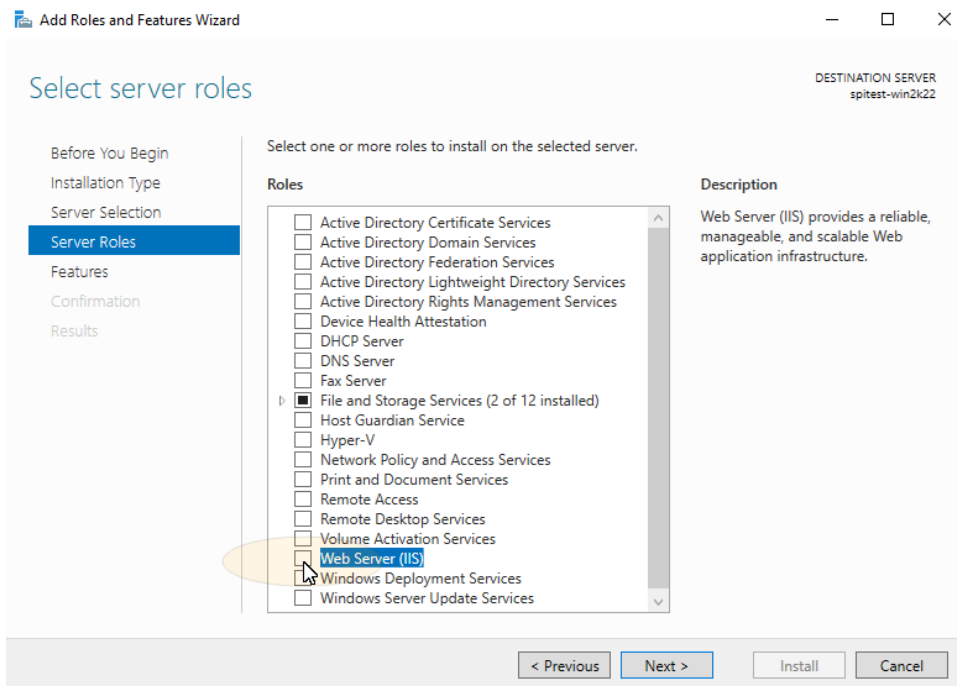
On the next panel, you will generally select “Role-based or feature-based installation.” Click the “Next” button to continue.



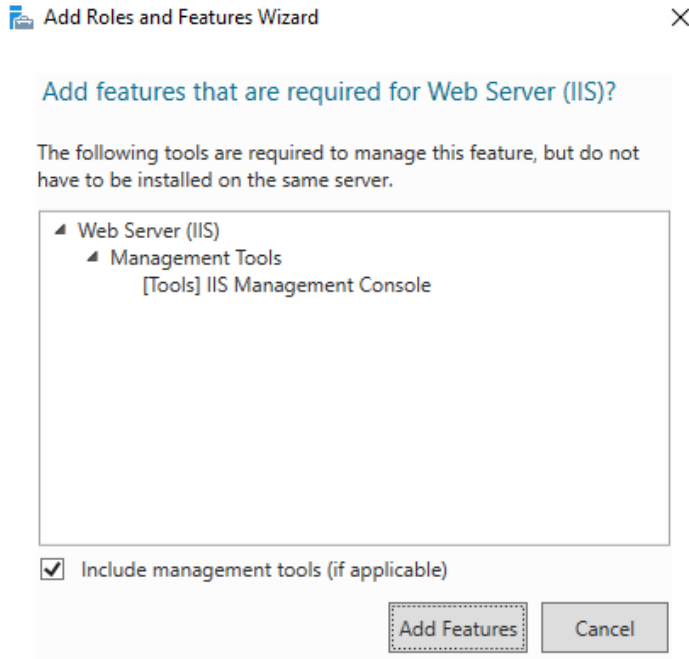
On the next panel, you will select the destination server to install to. Once the machine is selected, click the “Next” button to continue.



On the “Select server roles” panel, scroll down and check the option for “Web Server (IIS).”

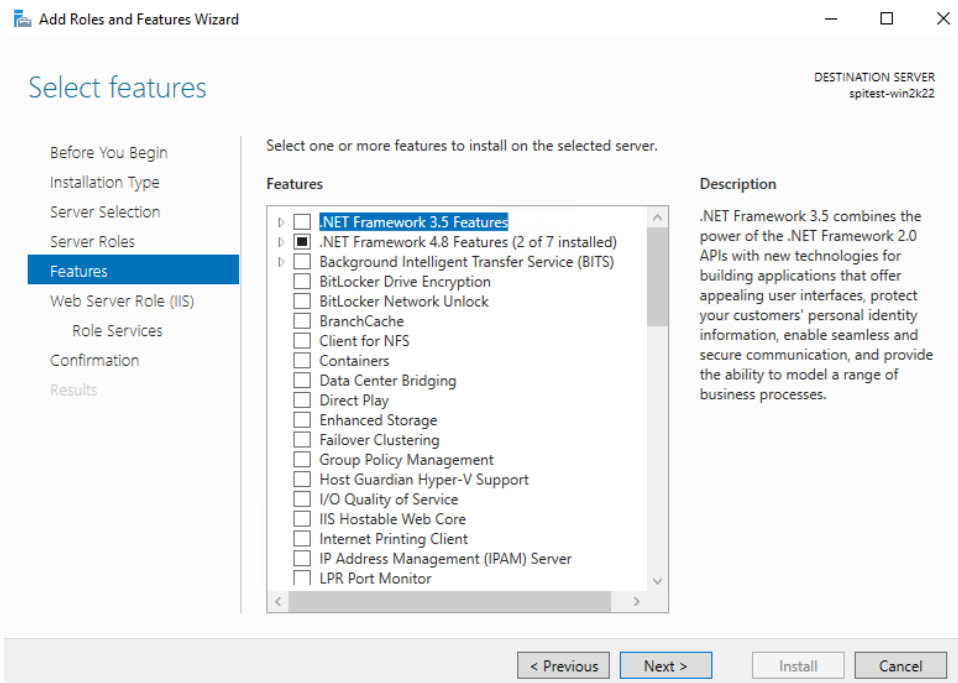


When you click on the option, you could receive a message indicating that additional required features need to be added. Click the “Add Features” button.

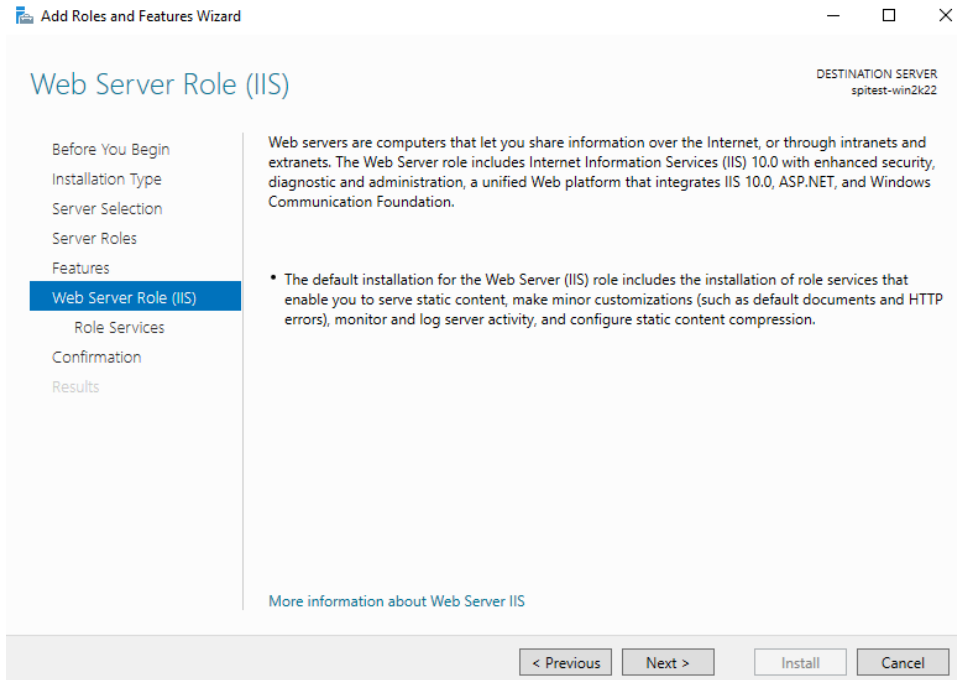


Click the “Next” button to continue.

On the “Select Features” panel, no options need to be selected. Click the “Next” button to continue.

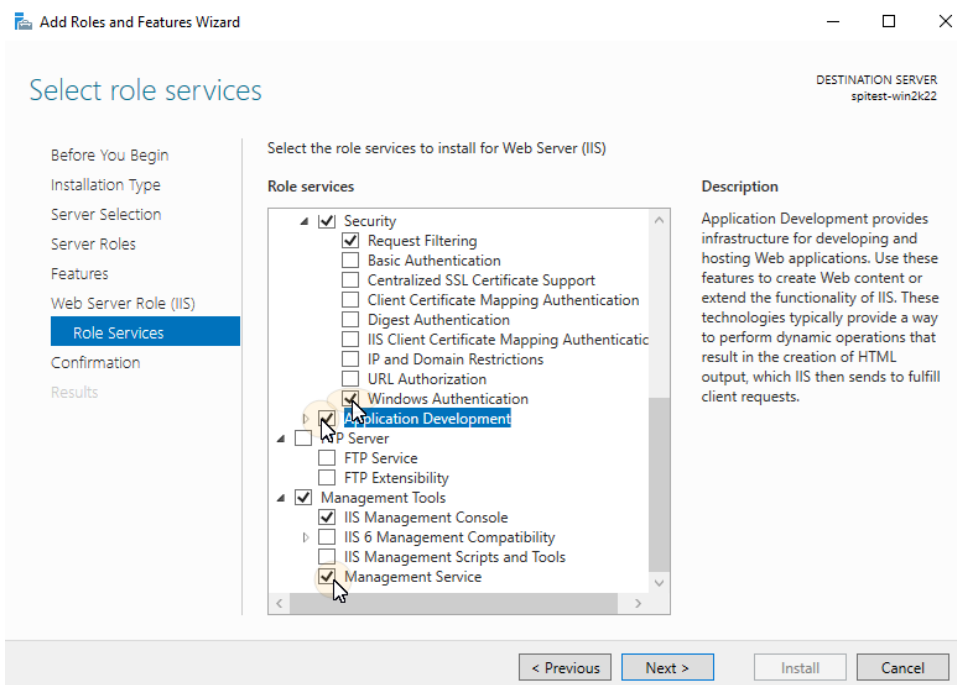


On the “Web Server Role (IIS)” wizard panel, click “Next” to continue.



On the “Select role services” panel, some options need to be selected.

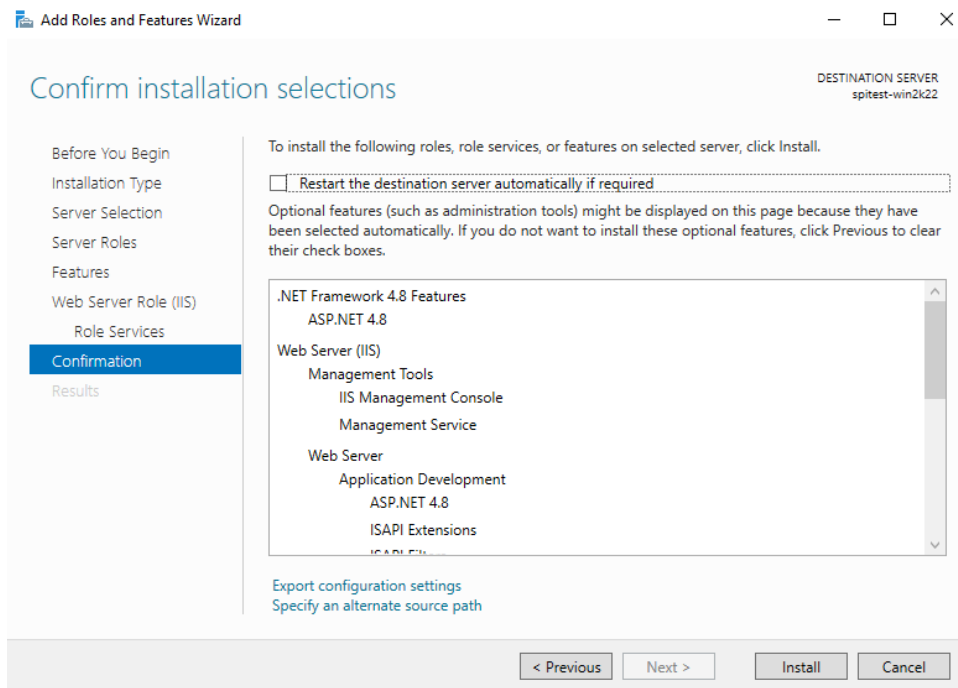
Scroll down and check “Windows Authentication.” Expand “Application Development” and select and check “ASP.NET 4.5” (older versions of IIS will show ASP.NET 4.5). When you do this, you will be presented with a pop-up to add additional features, click the “Add Features” button. Finally, check “Management Service.”



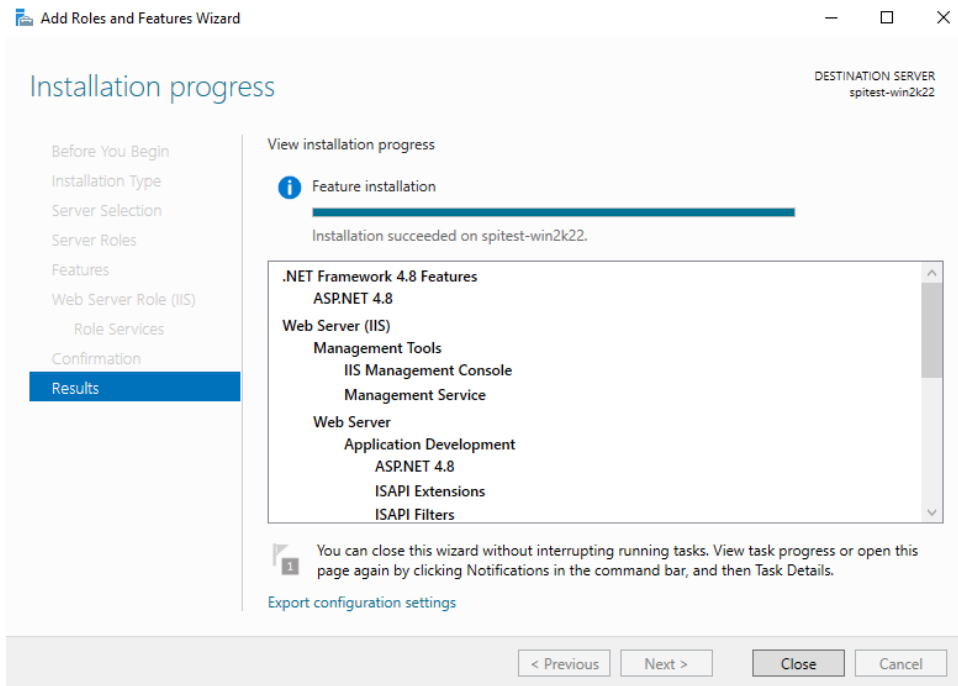
Click the “Next” button to continue.



On the final panel, you have the option to automatically restart the system if needed. Check the box for that option if you would like to use it. The decision on if a reboot is needed is made by Windows.



Click the "Install" button to start the installation process.



When the installation is complete, reboot the system if necessary. Otherwise, click the "Close" button to exit the wizard. To continue the installation of Status Web, go to the "Installing the Web Platform Installer & Web Deploy" section of this document.

## Verifying Microsoft IIS Features

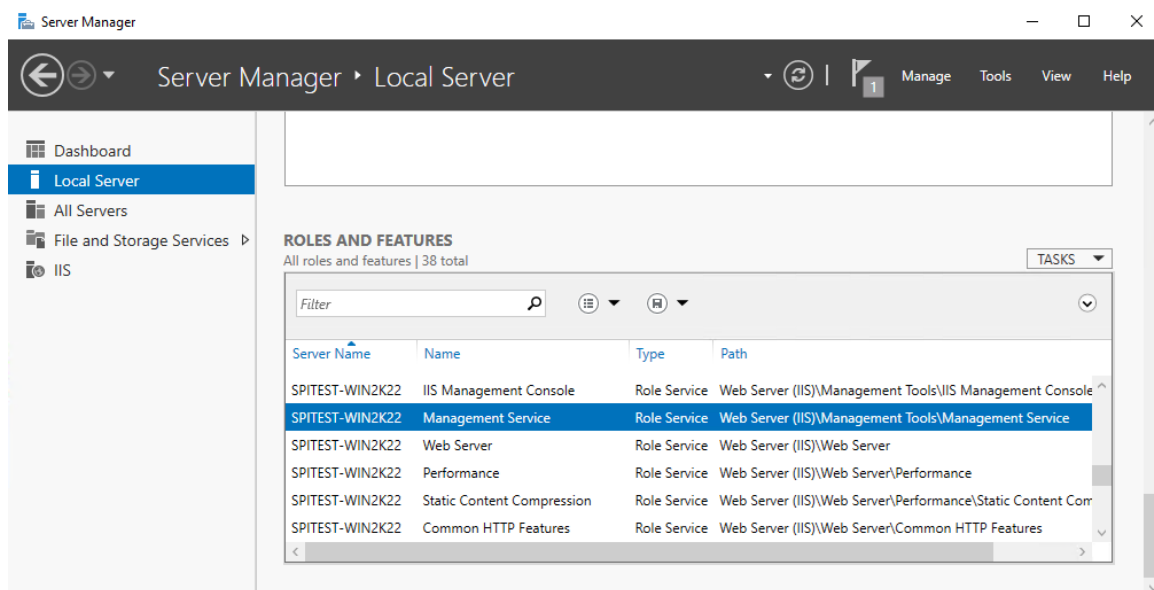
If you are installing SureSync Status Web on an existing Microsoft IIS server, you will want to verify that the required IIS features are installed on the system.

Start by launching the Server Manager. This can be done by clicking on the Server Manager icon in the Task Bar (if present) or by entering Server Manager into Search.

Click on “Local Server” on the left to display information about the server.

Scroll down until you see “Roles and Features.” Scroll down the list and look for “Management Service,” “ASP.NET 4.8 (ASP.NET 4.5 for older versions of IIS)” and “Windows Authentication” for Web Server (IIS). The “Management Service” is shown in the screenshot below.

You can use the search filter in the upper right-hand corner of “Roles and Features” to search for the names as well.



If all features are present, move to the “Installing the Web Platform and Web Deploy” section of this document.

If any features are missing, they will need to be installed. To do so, click on the “Tasks” button and select “Add Roles and Features” from the drop-down. If you need further guidance on adding the Management Service and Windows Authentication features to IIS, please follow the steps outlined in the “Installing Microsoft IIS” section found earlier in this document.

## Installing Web Deploy

This section will outline the procedure for installation of the Web Deploy, a required Microsoft component for IIS.

To install Web Deploy, please do the following:

1. Visit <https://www.iis.net/downloads/microsoft/web-deploy> and download the correct setup.

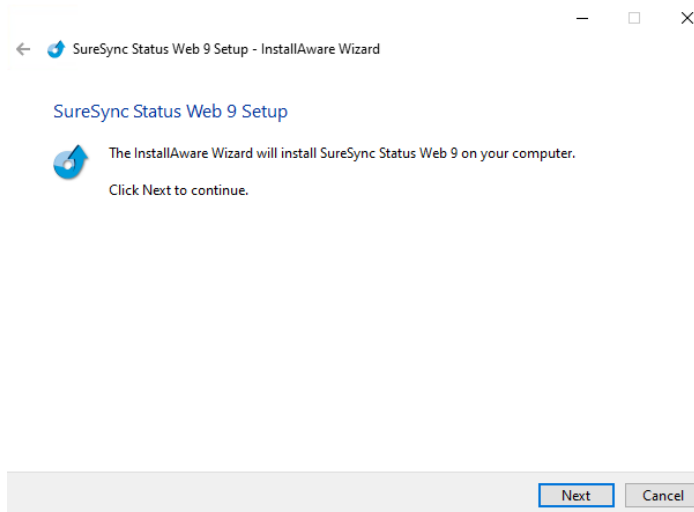
2. Double click on the installer to launch it.
3. Accept the license agreement and click “Next.”
4. Click on “Typical” for the Setup Type.
5. Click the “Install” button.
6. Click the “Finish” button to close the installer.

If you had the IIS Management MMC open, close it and relaunch it.

## Run the SureSync Status Web Installer

---

On the server running IIS that will host the Status Web website, run the SureSync9StatusWeb.exe setup file. This setup will install a configuration utility used to define connections to your SureSync Scheduler(s) and a Web Deploy zip file containing the Status Web website files.



By default, the installation folder is C:\Program Files (x86)\Software Pursuits\SureSync Status Web 9). In this folder you will find a WebDeploy subfolder containing the files necessary to install the website on the system.

## Website Configuration via IIS Manager (UI)

---

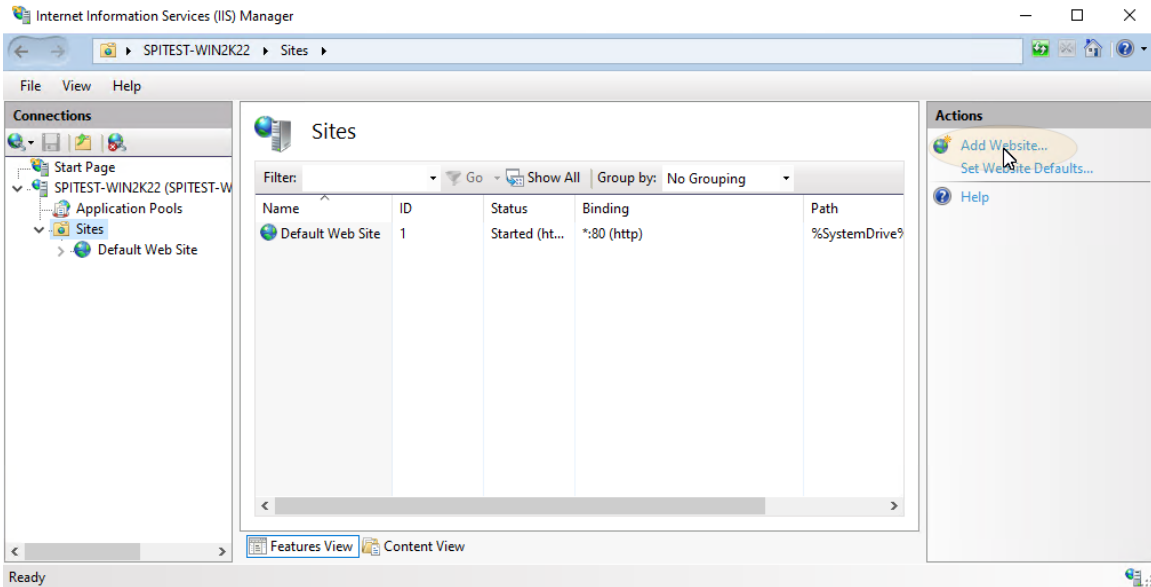
The Status Web website must be created and configured in IIS to allow users access to it.

### **Step 1: Create a Folder to Store the Website Files**

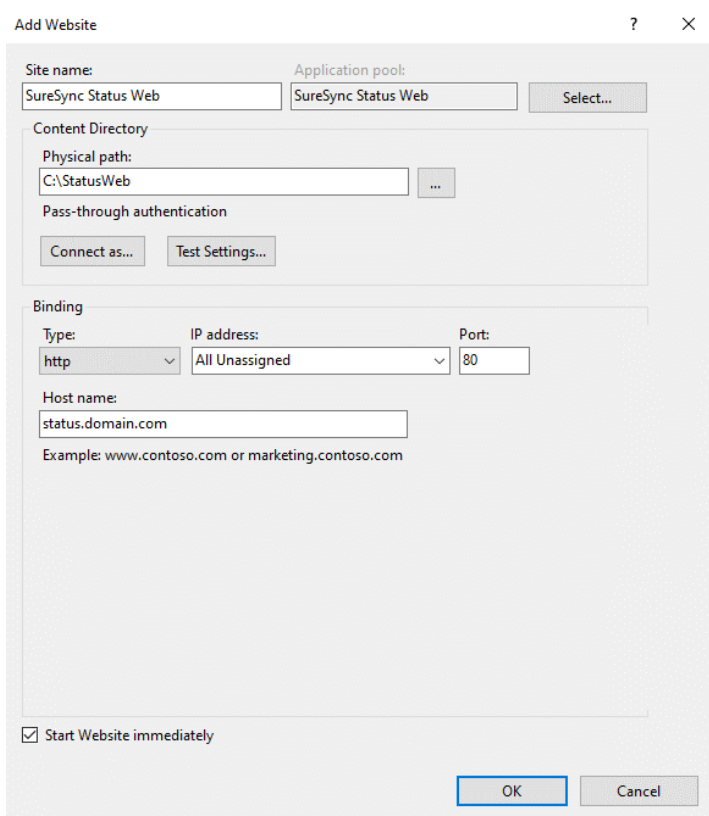
Open Windows Explorer on the IIS server and create a folder to be used to store the website files. For this example, we will use C:\StatusWeb. Right click on the folder and select Properties. On the Security tab, you will want to grant Read permission to any user account who will be using Status Web.

### **Step 2: Create the Website in IIS**

Launch the Internet Information Services (IIS) Manager. Click on Sites in the left-hand tree view and then click on “Add Website”



The following panel will be displayed:



To create the website, define the following:

- **Site Name:** Give the website a name of your choice. In this example, we will use SureSync Status Web. By default, an Application Pool of the same name is created.
- **Physical Path:** Either type the path you created in Step 1 into this field or click “Browse” and browse to it.

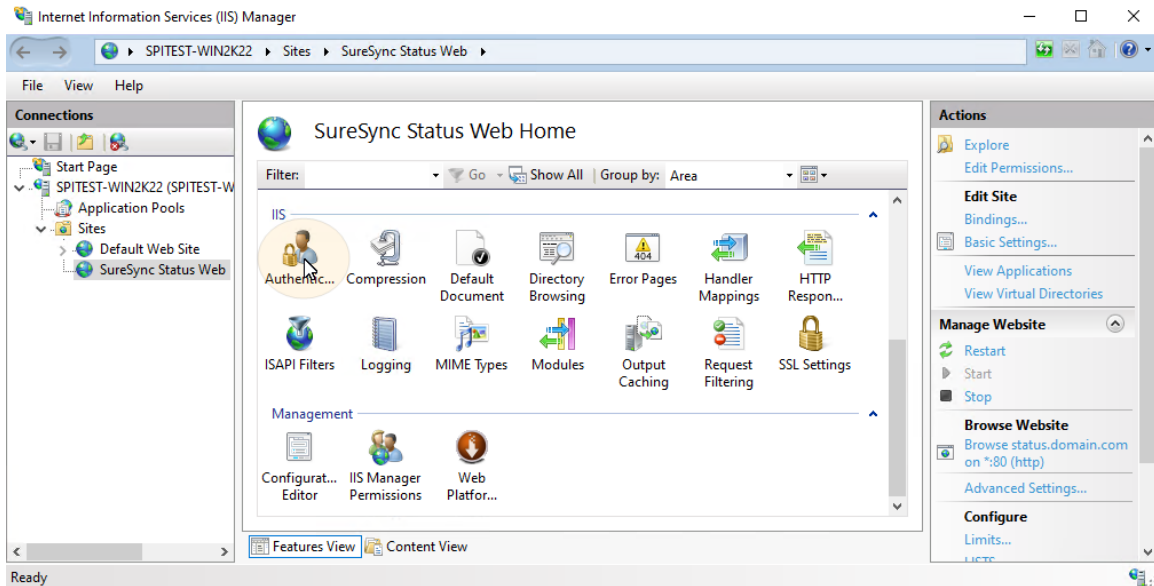
- **Binding:** The binding defines the web address used to access the Status Web website. If the site is to be accessed from the Internet, you must use a public domain name and have an A record in your DNS that points to the web server.

Software Pursuits recommends the purchase of an SSL certificate if you will be having users access Status Web via the Internet. This will encrypt the credentials provided by the users. An example process for configuring SSL for an IIS website can be found at <http://www.iis.net/learn/manage/configuring-security/how-to-set-up-ssl-on-iis>.

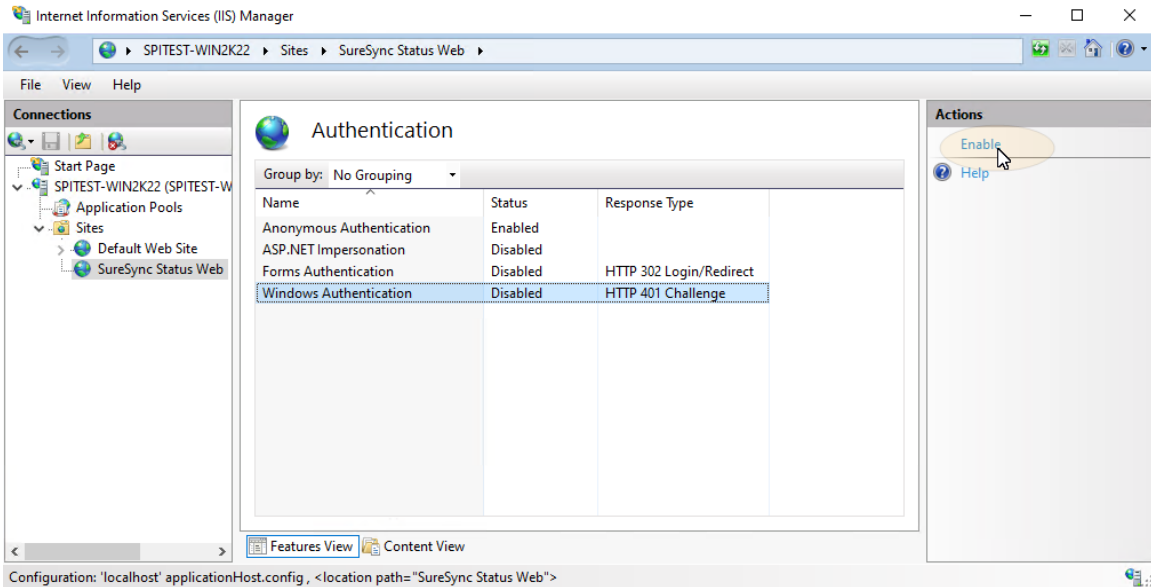
Click the “OK” button to create the website.

**Step 3: Enable Windows Authentication for the Website**

Click on the newly created website and then click on the “Authentication” button

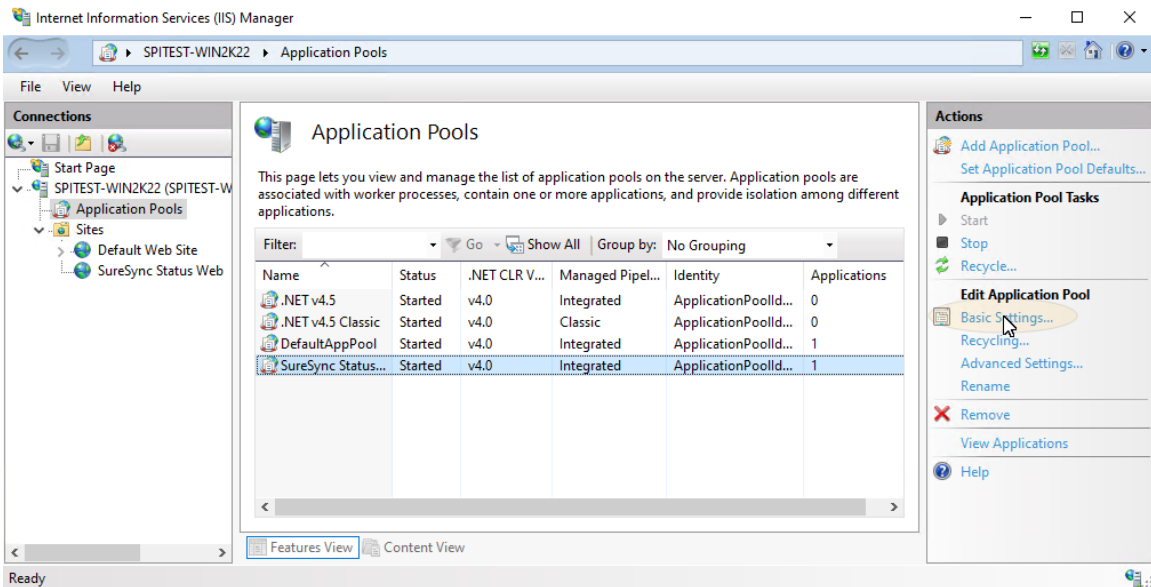


Click on “Windows Authentication” and then click on “Enable” in the “Actions” menu.

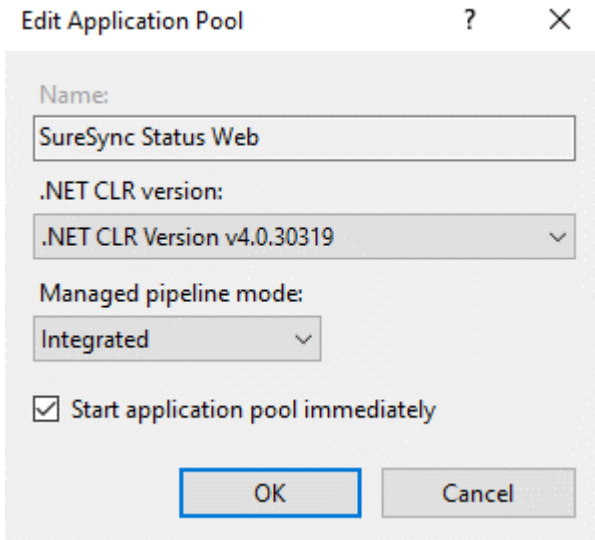


#### **Step 4: Confirm Application Pool Settings**

In the IIS Manager, click on Application Pools in the left tree view and then click on the SureSync Status Web application pool. Under the “Actions” menu on the right side, click on “Basic Settings...”



A dialog box like the one below will be displayed.

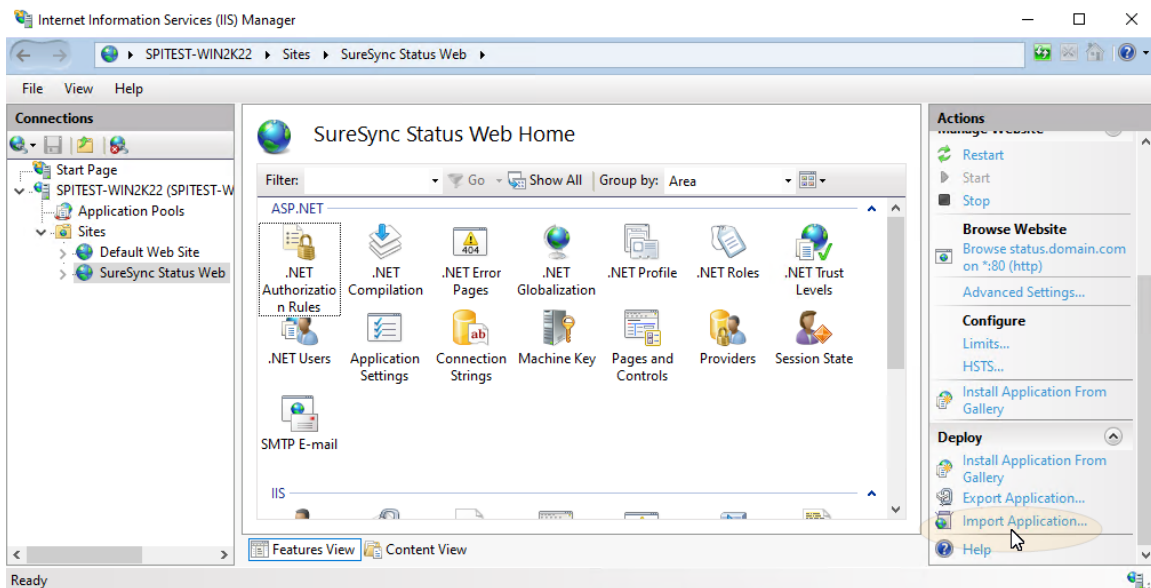


Ensure that the “.NET CLR version” drop-down is set to .NET CLR v4.0.30319. This configures the application pool to use the required .NET 4.8 Framework.

Click “OK” and if you had to change the .NET version, recycle the application pool by clicking the “Recycle” button on the “Actions” menu.

### **Step 5: Install Website Files using Web Deploy**

In the IIS Manager, click on the SureSync Status Website.



On the “Actions” menu, under “Deploy” click on “Import Application.”

The following dialog will be displayed:



**Select the Package**

Specify the location of the package (for example, C:\WebApplication.zip).

Package path:

Browse...

Previous

Next

Finish

Cancel

Click on the “Browse” button and browse to C:\Program Files (x86)\Software Pursuits\SureSync Status Web 9\WebDeploy. Select the StatusWebWebsite.zip and click the “Open” button.



**Select the Package**

Specify the location of the package (for example, C:\WebApplication.zip).

Package path:

Browse...

Previous

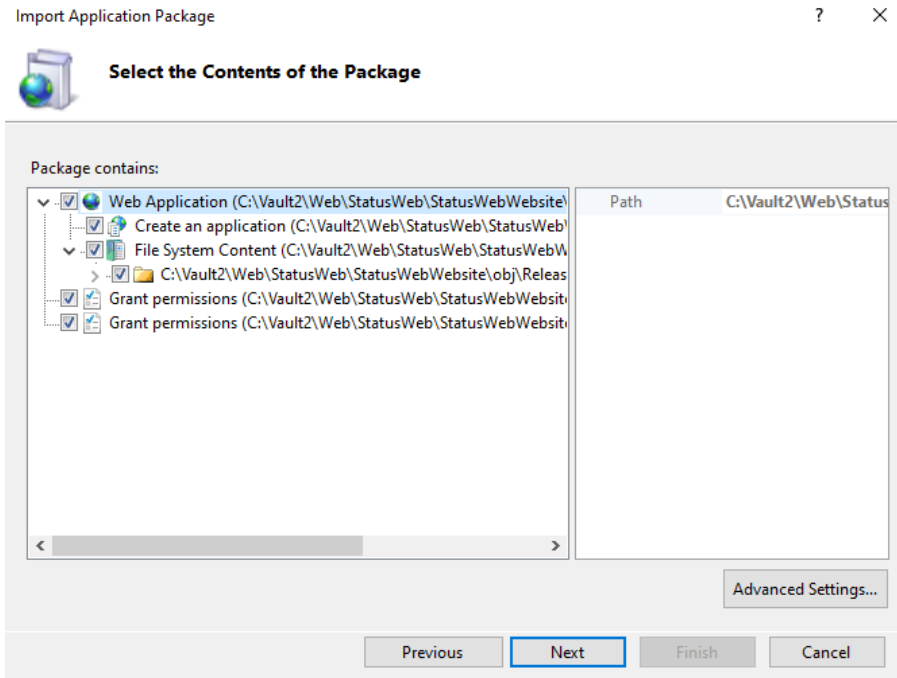
Next

Finish

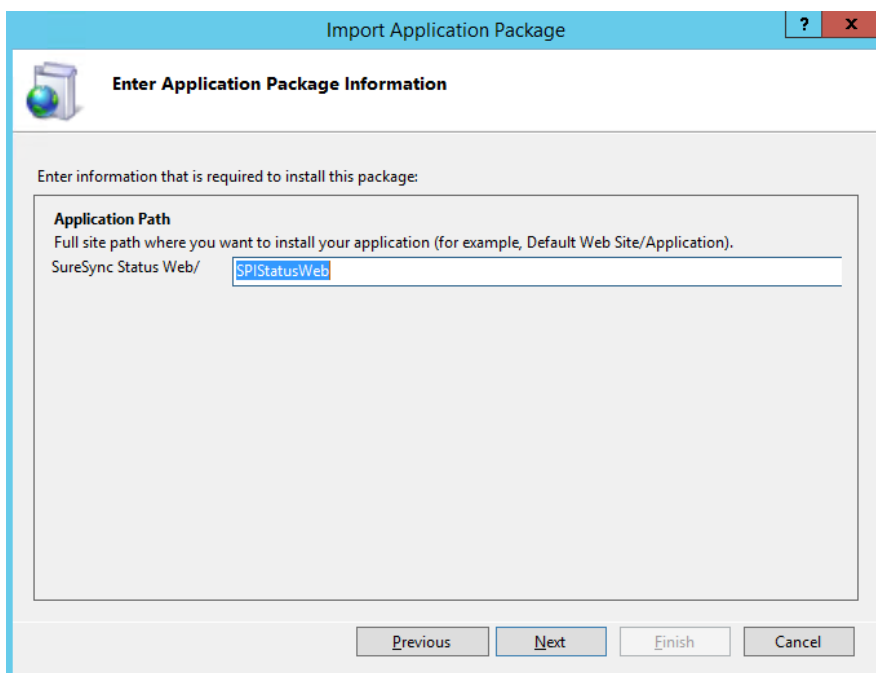
Cancel

Click the “Next” button.





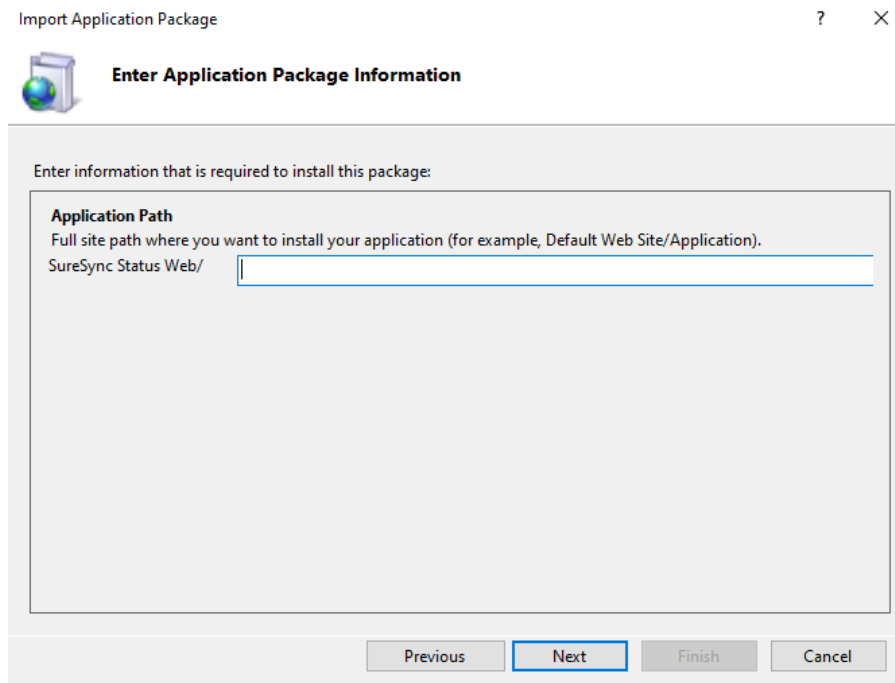
The next panel shows the contents of the package. By default, all that needs to be installed is selected. Click “Next” to continue.



The next panel defines the name of the application. What you enter here is critical to what the URL will be for accessing the site.

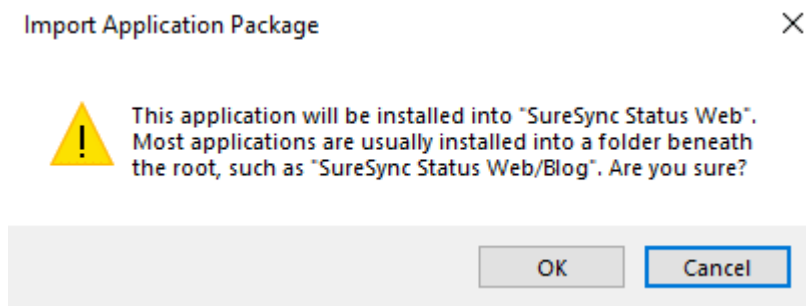
If you want the Status Web website accessible from a URL such as <http://status.domain.com/status>, you would enter status in this field.

If you want the Status Web website accessible from <http://status.domain.com>, you should clear the field so it looks like this:



Define the Application Path as appropriate for your environment. Click "Next" to continue.

If you have cleared the application path definition, you will receive the following prompt:



In that case, click "OK" to continue with the setting or click "Cancel" to go back and define an application name.

The Status Web website will now be installed. You will receive a prompt indicating that the package was installed successfully. Click the "Finish" button to exit the wizard.

## Website Configuration via the Command Line

WebDeploy provides a method of installation via the command line. To install via the command line, launch an elevated command prompt and change directory to the location of the SPIStatusWeb.zip file. By default, this folder is C:\Program Files (x86)\Software Pursuits\SureSync Status Web\WebDeploy.

In this directory, you will see a file named SPIStatusWeb.deploy.cmd. This is a generated script to be used to deploy the website. The SPIStatusWeb.SetParameters.xml file contains deployment parameters.

A detailed guide on Web Deploy from Microsoft's ASP.net website can be found at <http://weblogs.asp.net/scottgu/automating-deployment-with-microsoft-web-deploy>. The section on "Deploying a Package from the Command-Line" provides further details.

## **Controlling Access to Status Web**

---

Access to the Status Web website is controlled by Windows authentication within IIS and SureSync's Group Folder security.

### **IIS Windows Authentication**

Using Windows Authentication with IIS for the Status Web website will allow users to log in using the same credential used to access their computer. This authentication method must be used because SureSync database security is also done with Windows accounts.

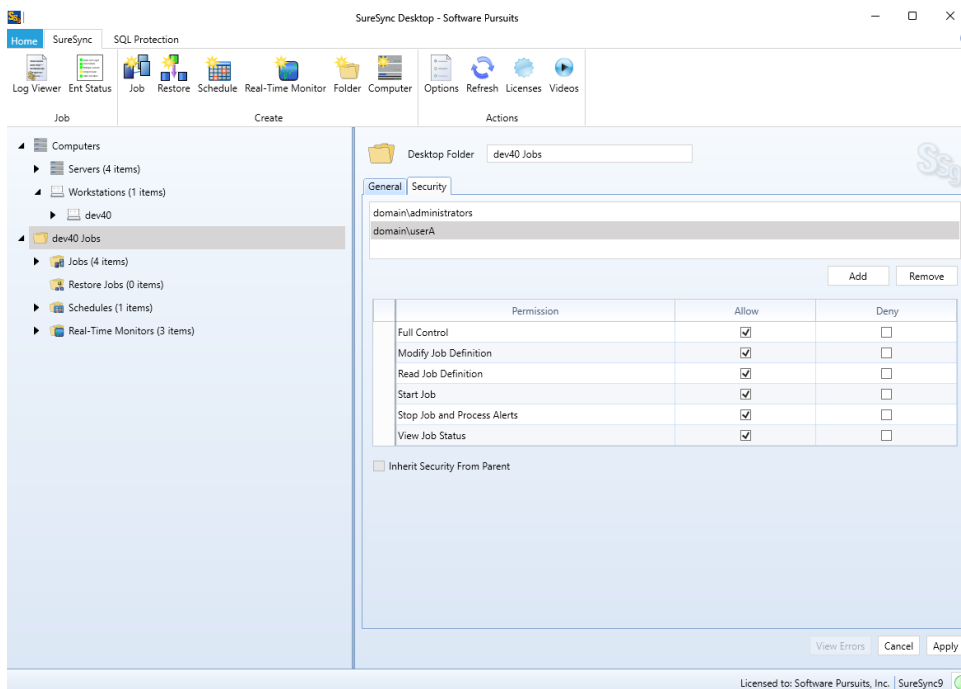
When configuring a website in IIS to use Windows Authentication, a user account must have Read NTFS permissions granted to the folder containing the website. Users without read permission will not be able to log into the website.

Software Pursuits recommends the purchase of an SSL certificate if you will be having users access Status Web via the Internet. This will encrypt the credentials provided by the users. An example process for configuring SSL for an IIS website can be found at <http://www.iis.net/learn/manage/configuring-security/how-to-set-up-ssl-on-iis>.

## **SureSync Group Folders**

SureSync's Group Folders feature allows you to define the user accounts that should have access to perform various operations within SureSync. By default, when SureSync is installed on a computer in a domain the accounts with access will be the user creating the database, the local administrators group and the domain administrators group.

You will need to modify Group Folder security if the users you want to use Status Web are not included in the defaults. To do so, launch the SureSync Desktop and click on the Group Folder you wish to modify.



On the "Security" tab, you can click "Add" and add the appropriate accounts. The required permissions are:

- **Start Job:** Required to start Jobs, Schedules and Real-Time Monitors in Status Web.
- **Stop Job and Process Alerts:** Required to stop Jobs, Schedules and Real-Time Monitors in Status Web
- **View Job Status:** Required to view status in Status Web

You can also define security on individual Jobs, Schedules or Real-Time Monitors. This is not recommended because it results in more configuration work. As with Windows NTFS security, setting security on the Group Folder and allowing it to be inherited to the Jobs, Schedules and Real-Time Monitors is easier. Additional details on Group Folder Security can be found in the SureSync help file by pressing F1 while on the Security tab in the SureSync Desktop.

## Configuring SureSync Scheduler(s) and MFT Hubs

The Status Web website uses a configuration file to locate the SureSync Scheduler(s) and SureSync MFT Hub(s) that it should use to retrieve status information.

### Configure the Scheduler Connection

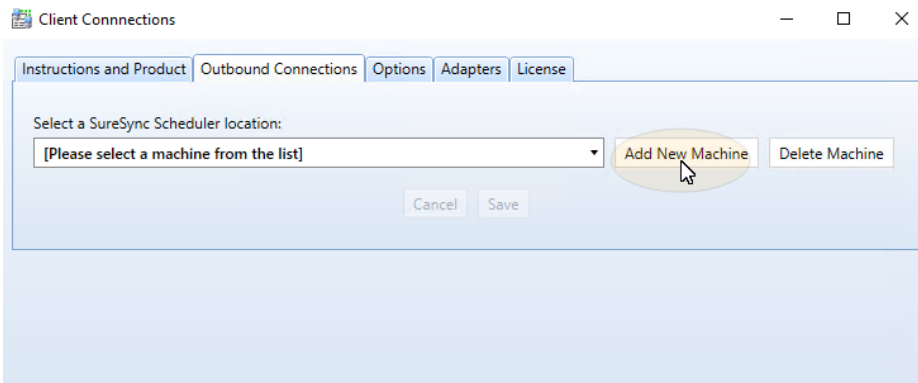
To access this utility, go to Start | All Programs | SureSync Status Web 9 and launch the SureSync 9 Status Web Configuration Utility.

The following utility will launch:

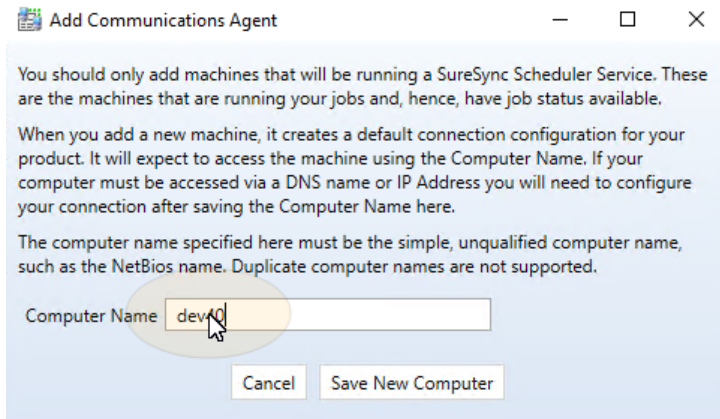


To begin the configuration, select either SureSync v9 or SureSync MFT from the drop-down menu. SureSync v9 is selected by default.

Click on the “Outbound Connections” tab. Click on the “Add New Machine” button.

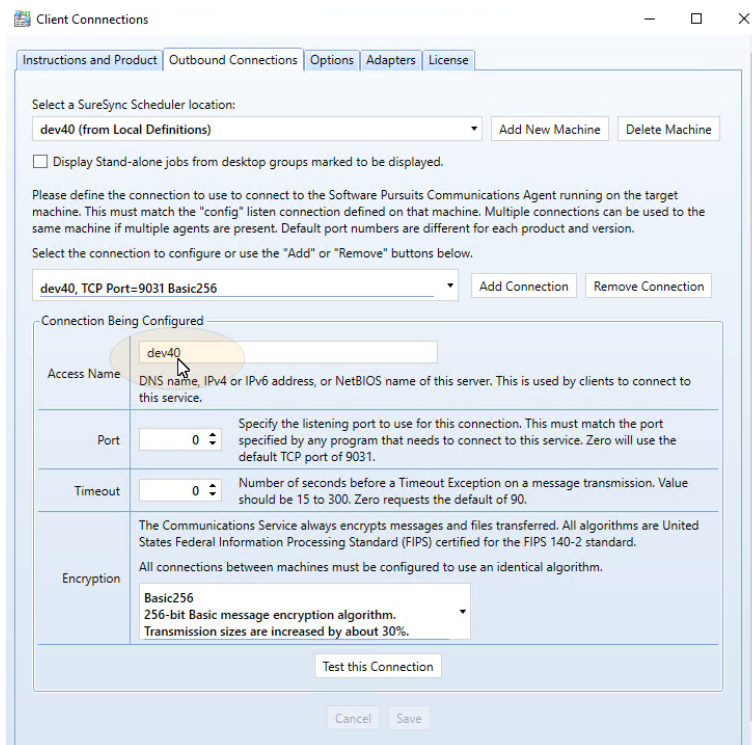


On the “Add Communications Agent” dialog box, enter the NetBIOS computer name of the machine running the SureSync Scheduler. This must be the NetBIOS computer name and not an IP address or fully qualified domain name (FQDN). If you need to access the Scheduler machine via one of these methods, this will be configured later in the wizard.



Click the “Save New Computer” button. This will generate the default configuration.

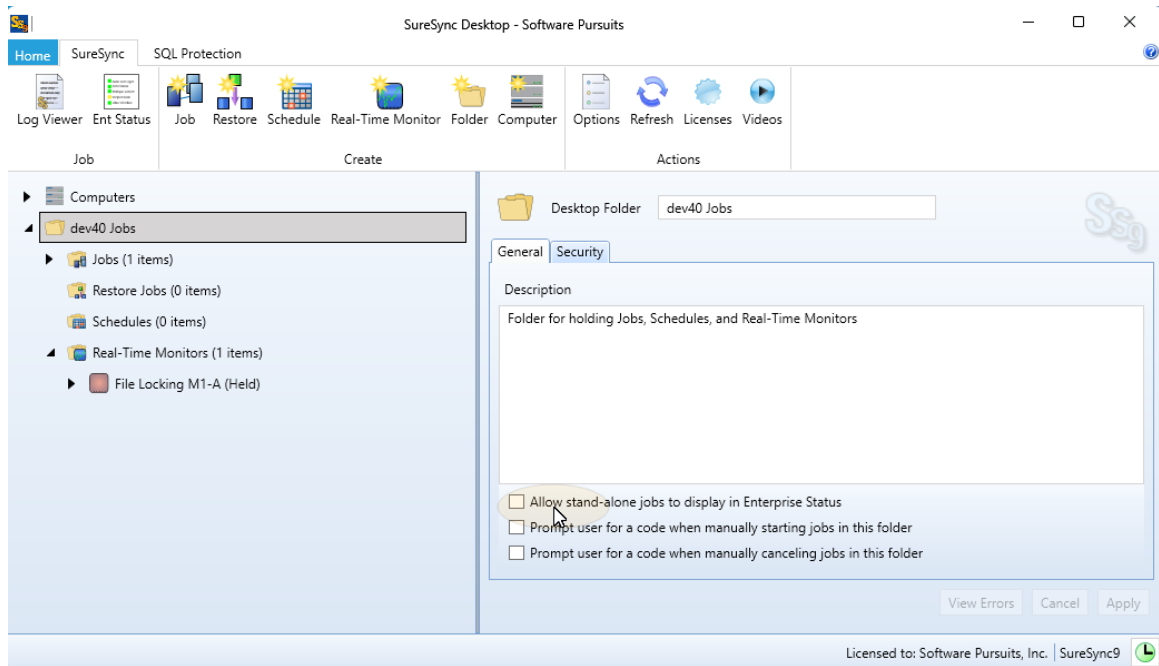
If you are accessing the SureSync Scheduler or MFT Hub via an IP address or FQDN, you would enter that IP or FQDN in the “Access Name” field. If your environment is using a non-standard Port, you would configure that in the “Port” field.



Click the “Save” button if you have made changes. The “Test this Connection” button can be used to confirm connectivity to the SureSync Scheduler or MFT Hub machine.

### **Allow the Display of Standalone Jobs (optional)**

By default, standalone Jobs do not appear in Enterprise Status or Status Web. To configure them to appear, you must enable the “Allow stand-alone jobs to display in Enterprise Status” option on the General tab of the Group Folder.

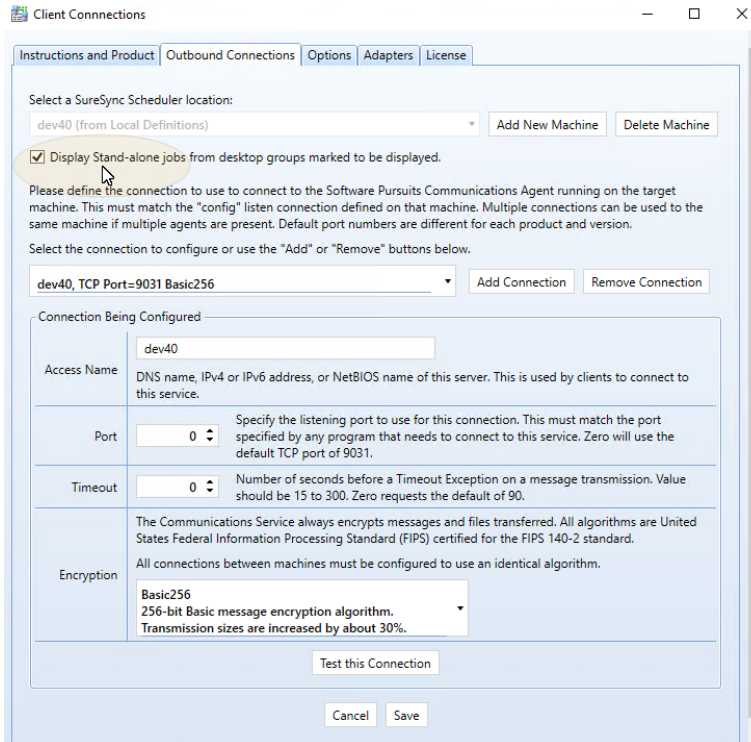


As a best practice, it is best to create standalone Jobs that you want to have appear in Status Web in a separate Group Folder. If you enable this option for all of your Group Folders, you can have a large number of standalone Jobs showing in the website. This can be hard to navigate and cause web site performance issues.

In addition, you must modify the connection defined for Status Web to enable the display of standalone Jobs.

Go to Start | All Programs | SureSync 9 Status Web and launch the SureSync 9 Status Web Configuration Utility if you closed it.

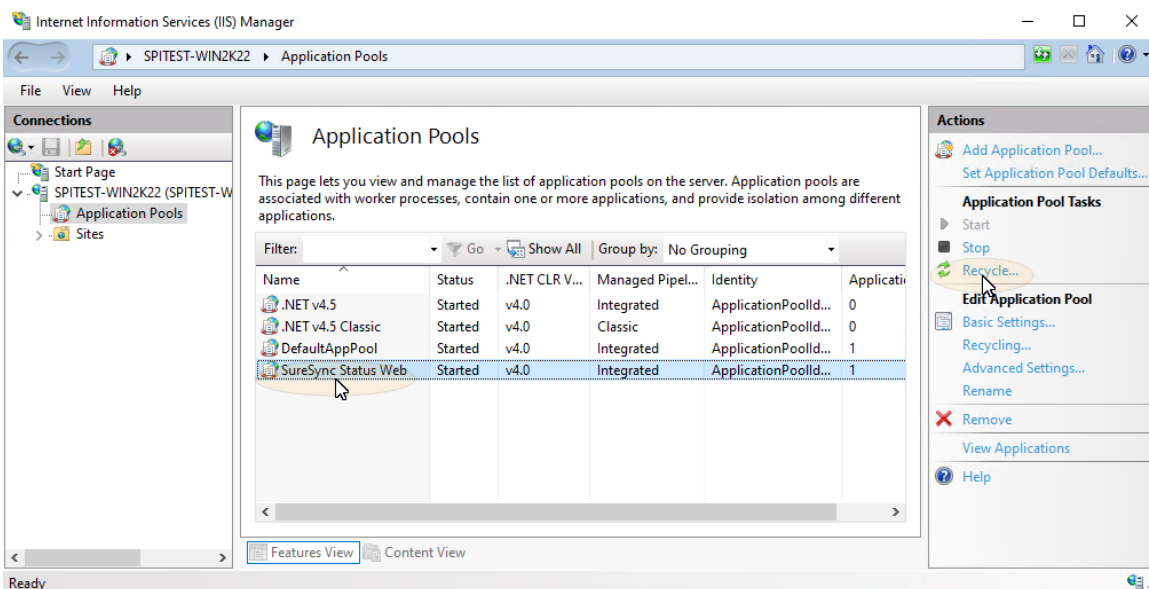
Click on the “Outbound Connections” tab and check the “Display Stand-alone jobs from group folders marked to be displayed” option. If you have multiple Schedulers, select the appropriate Scheduler from the drop-down menu.



## **Recycle the IIS Application Pool**

Upon completing the configuration, you must recycle the IIS Application Pool used by the Status Web website to allow the changes to take effect.

To recycle the Application Pool, launch the Internet Information Services (IIS) Manager and click on Application Pools in the left tree view.





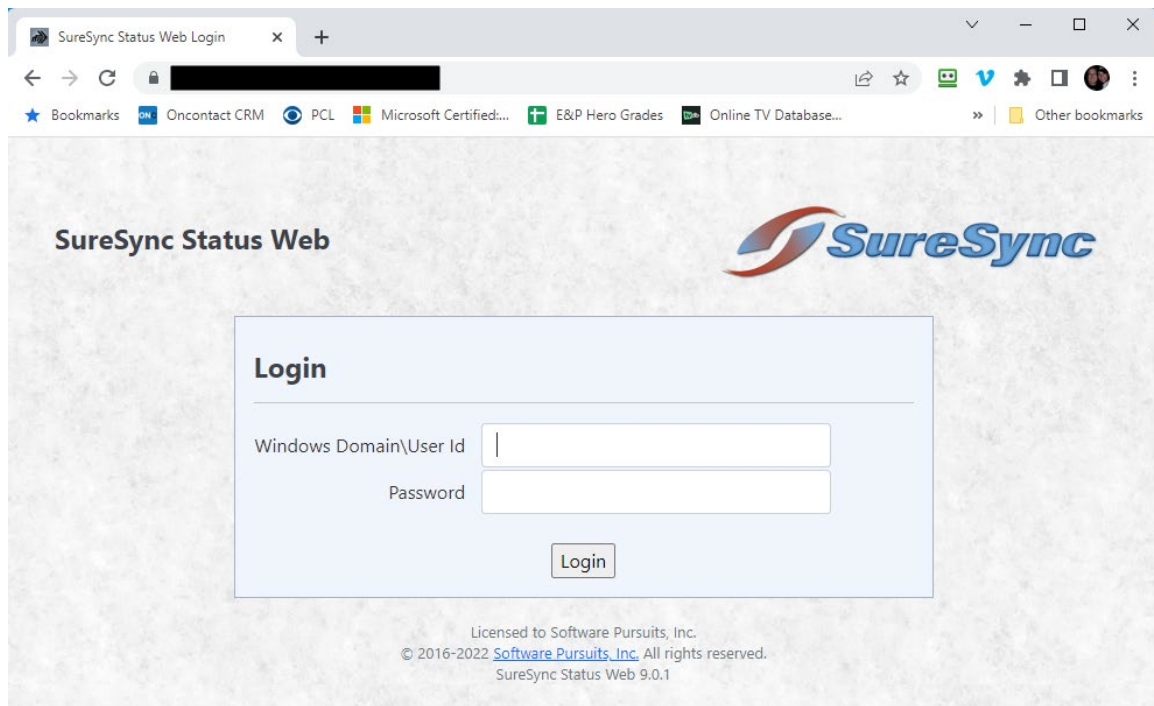
Click on the Application Pool name in the middle of the panel. The correct Application Pool name will depend on what you configured when installing the website files. Click on the “Recycle” button in the Actions menu.

You can confirm the Application Pool name by expanding Sites, clicking on the Status Web website and then clicking on Basic Settings in the right hand “Actions” menu.

## Using Status Web

To use Status web, open a web browser and enter the URL you defined earlier. For example <http://syncstatus.domain.com>.

If you have properly configured Windows authentication for the IIS website, you will receive a prompt asking for a username and password. This dialog box will look different depending on browser.



Enter the credential and click on the “Log In” button.

The Status Web page will load and look something like the screenshot below.

Job	Action	Alerts	Warnings	Exceptions	Bytes Copied	Bytes Queued	Active Actions	Actions Queued	
Dev22 Mirror to External Drives	DEV22	0	42	3	2,119.4GB	0KB	0	0	
Dev22 Production Archives	Hub: DEV22	Disable	0	0	0	40.1MB	1.8MB	0	69
Archive Australia Hosting	Disable	0	0	0	0KB	0KB	0	0	
Archive North America Hosting	Disable	0	0	0	40.1MB	0KB	0	0	
Archive NuGetPackages to SPIProdVM2	Disable	0	0	0	0KB	0KB	0	0	
Archive SPISQL SQL Backups to SPIProdVM2	Disable	0	0	0	0KB	0KB	0	0	
Archive SPIWebSvr2 E: Websites to SPIProdVM2	Disable	0	0	0	36KB	194KB	0	1	
Archive SPIWebSvr2 F: webfiles to SPIProdVM2	Disable	0	0	0	0KB	0KB	0	0	
Archive SPIWebSvr2 HostedImages	Disable	0	0	0	0KB	0KB	0	0	
Archive SPIWebSvr2 IIS Config to SPIProdVM2	Disable	0	0	0	0KB	0KB	0	0	
Archive SPIWebSvr2 SQL to SPIProdVM2	Disable	0	0	0	0KB	0KB	0	0	
Archive SPIWebSvr2 SSL Certificates to SPIProdVM2	Disable	0	0	0	0KB	0KB	0	0	
Archive SPIWebSvr2 Web-Orgs	Disable	0	0	0	0KB	0KB	0	0	

The Status Web application has two primary goals:

- Allow you to start and stop Jobs, Schedules and Real-Time Monitors
- Review status information and statistics for each Job, Schedule and Real-Time Monitor

### Start / Stop

To start or stop a Job, Schedule or Real-Time Monitor click on the item and then click the corresponding button on the left.

### View Status

To view status, review the columns to the right of the Job name. Statistics provided include alerts, warnings, exceptions, copied and more.

In addition, you can spin down an item to get additional detail. This is accomplished by clicking on the triangle to the left of the start/stop button.

Job	Action	Alerts	Warnings	Exceptions	Bytes Copied	Bytes Queued	Active Actions	Actions Queued																												
Archive Australia Hosting	Disable	0	0	0	0KB	0KB	0	0																												
Archive North America Hosting	Disable	0	0	0	40.1MB	0KB	0	0																												
<div style="border: 1px solid #ccc; padding: 5px;"> <p><b>Archive North America Hosting</b></p> <table border="0"> <tr> <td>0 Files Scanned</td> <td>20 Added</td> <td>0 Exceptions</td> <td>40.1MB Copied</td> </tr> <tr> <td>0 Folders Scanned</td> <td>0 Replaced</td> <td>0 Warnings &amp; Errors</td> <td>0KB Bytes Transmitted</td> </tr> <tr> <td>0 Active Locks</td> <td>3 Removed</td> <td>0 Unresolved Alerts</td> <td>46 Compares</td> </tr> <tr> <td>4,348 Journal Events</td> <td>0 Altered</td> <td>0 All Unresolved Alerts</td> <td>0:27:15 Elapsed</td> </tr> </table>   <table border="0"> <tr> <td>0 Active Actions</td> <td>0 Active Scans</td> <td>0 Retries Queued</td> <td></td> </tr> <tr> <td>0 Actions Queued</td> <td>0 Folder Scans Queued</td> <td></td> <td>Job Started: 4/5/2022 9:17 AM</td> </tr> <tr> <td>0KB To be Copied</td> <td>0 State Scans Queued</td> <td></td> <td></td> </tr> </table> <p>Job is Enabled</p> </div>									0 Files Scanned	20 Added	0 Exceptions	40.1MB Copied	0 Folders Scanned	0 Replaced	0 Warnings & Errors	0KB Bytes Transmitted	0 Active Locks	3 Removed	0 Unresolved Alerts	46 Compares	4,348 Journal Events	0 Altered	0 All Unresolved Alerts	0:27:15 Elapsed	0 Active Actions	0 Active Scans	0 Retries Queued		0 Actions Queued	0 Folder Scans Queued		Job Started: 4/5/2022 9:17 AM	0KB To be Copied	0 State Scans Queued		
0 Files Scanned	20 Added	0 Exceptions	40.1MB Copied																																	
0 Folders Scanned	0 Replaced	0 Warnings & Errors	0KB Bytes Transmitted																																	
0 Active Locks	3 Removed	0 Unresolved Alerts	46 Compares																																	
4,348 Journal Events	0 Altered	0 All Unresolved Alerts	0:27:15 Elapsed																																	
0 Active Actions	0 Active Scans	0 Retries Queued																																		
0 Actions Queued	0 Folder Scans Queued		Job Started: 4/5/2022 9:17 AM																																	
0KB To be Copied	0 State Scans Queued																																			
Archive NuGetPackages to SPIProdVM2	Disable	0	0	0	0KB	0KB	0	0																												
Archive SPISQL SQL Backups to SPIProdVM2	Disable	0	0	0	0KB	0KB	0	0																												